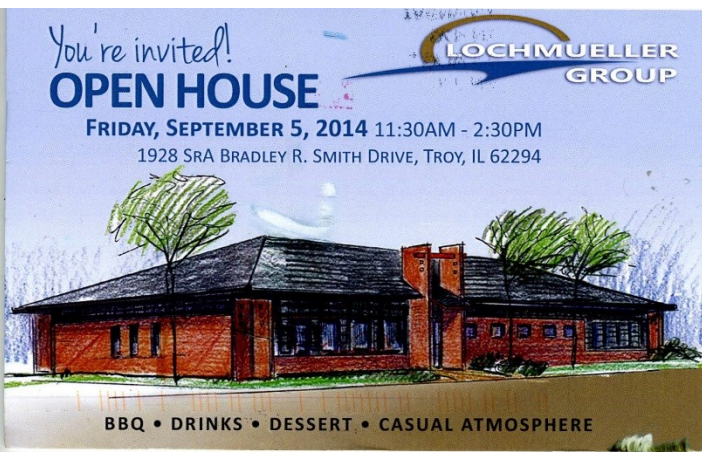




Above: Aspen Creek,
Left: The Fountains,



Above: Lochmueller Associates
Right: Love2Learn



Above: Lochmueller Groundbreaking
Right: Walgreen: (adjacent)



Activity in "The Greens of Troy" as of August 31, 2017
Our lot 11 has also been optioned to a major health provider.
We're looking for tenants that might go alongside, or within.